



UNIVERSITY OF CAMBRIDGE INTERNATIONAL EXAMINATIONS
General Certificate of Education Advanced Subsidiary Level and Advanced Level

GEOGRAPHY

9696/01

Paper 1 Core Geography

May/June 2007

INSERT

3 hours

READ THESE INSTRUCTIONS FIRST

This Insert contains all the figures referred to in the questions.

This document consists of **7** printed pages and **1** blank page.



Fig. 1 for Question 1

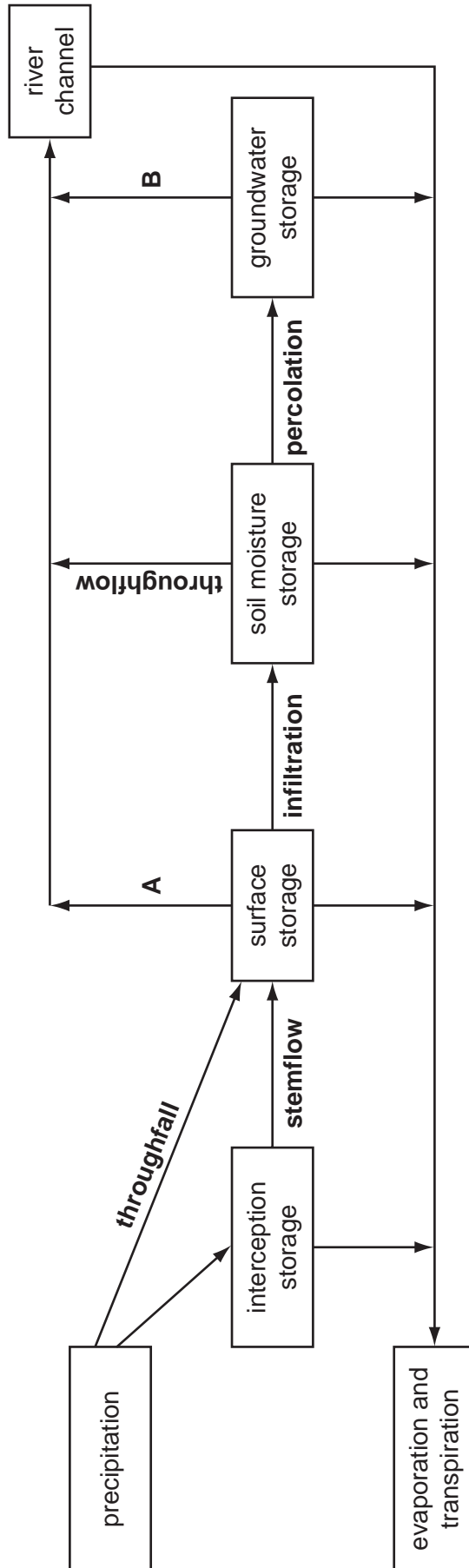


Fig. 2 for Question 2

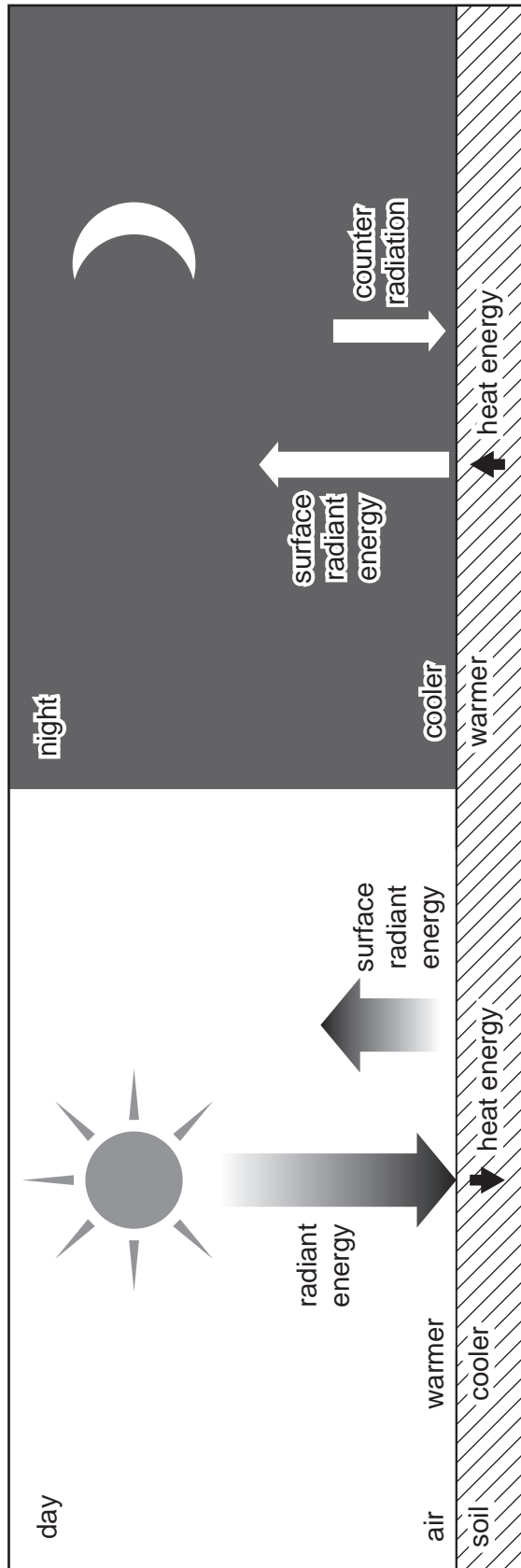


Fig. 3 for Question 3

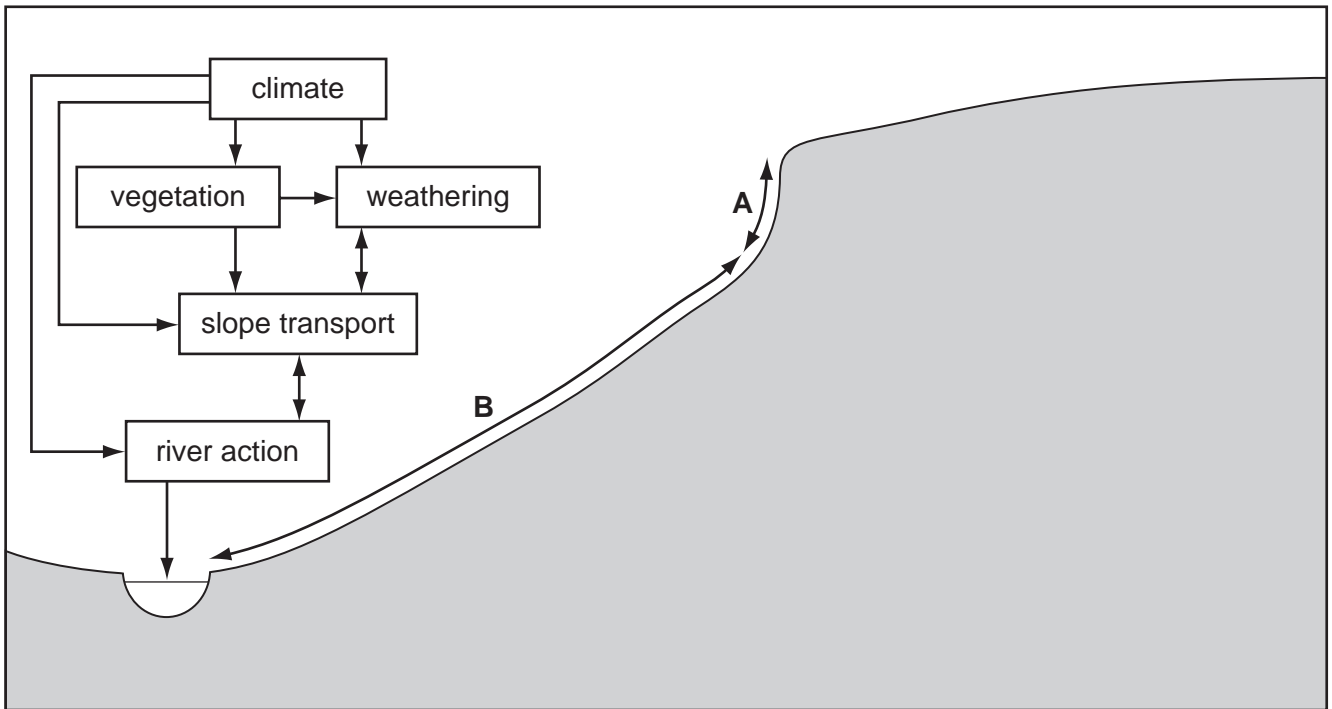


Fig. 4 for Question 4

Density of population by region, Chile, 2002

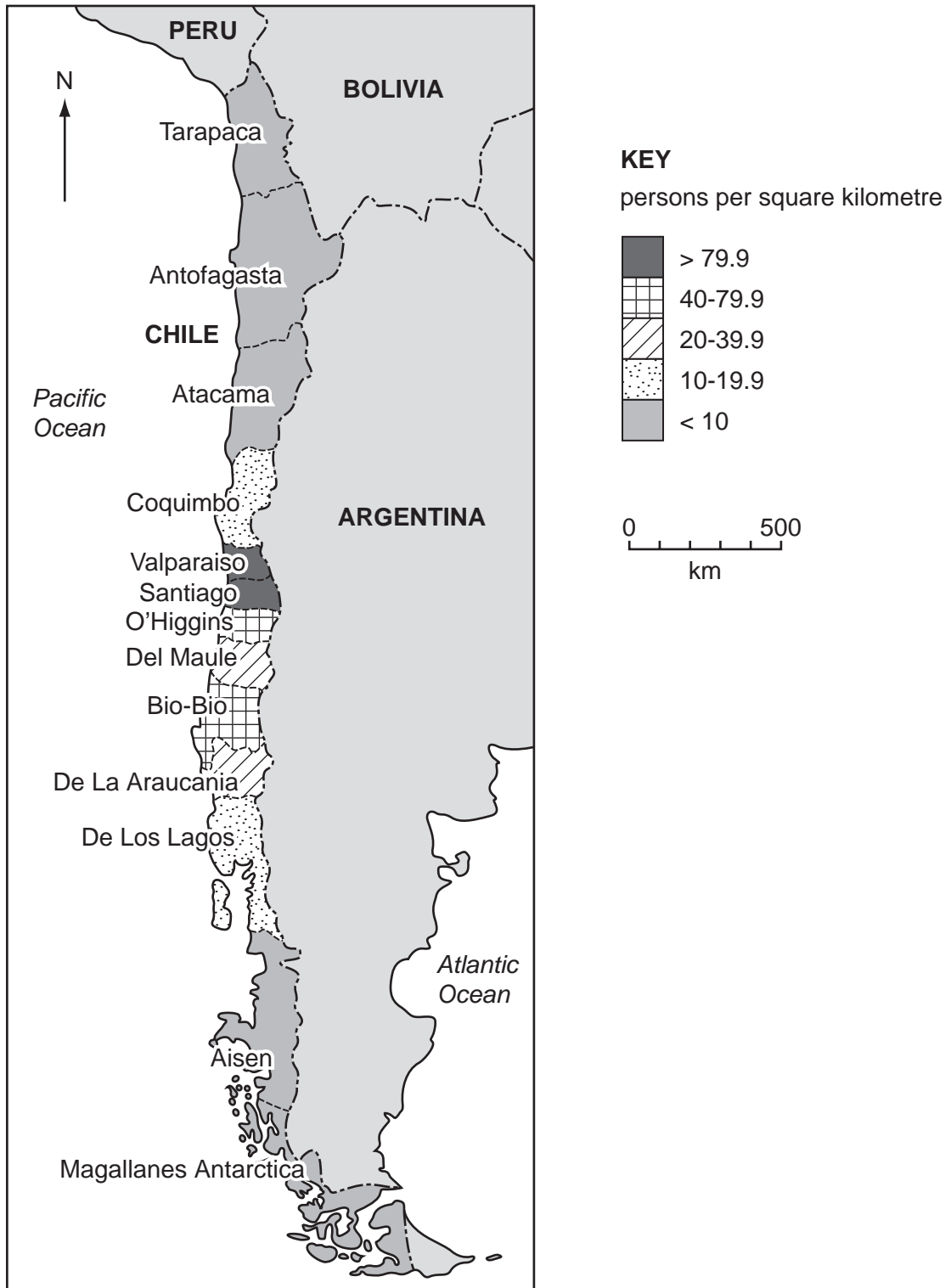


Fig. 5 for Question 5

Two processes within a large urban area in an MEDC

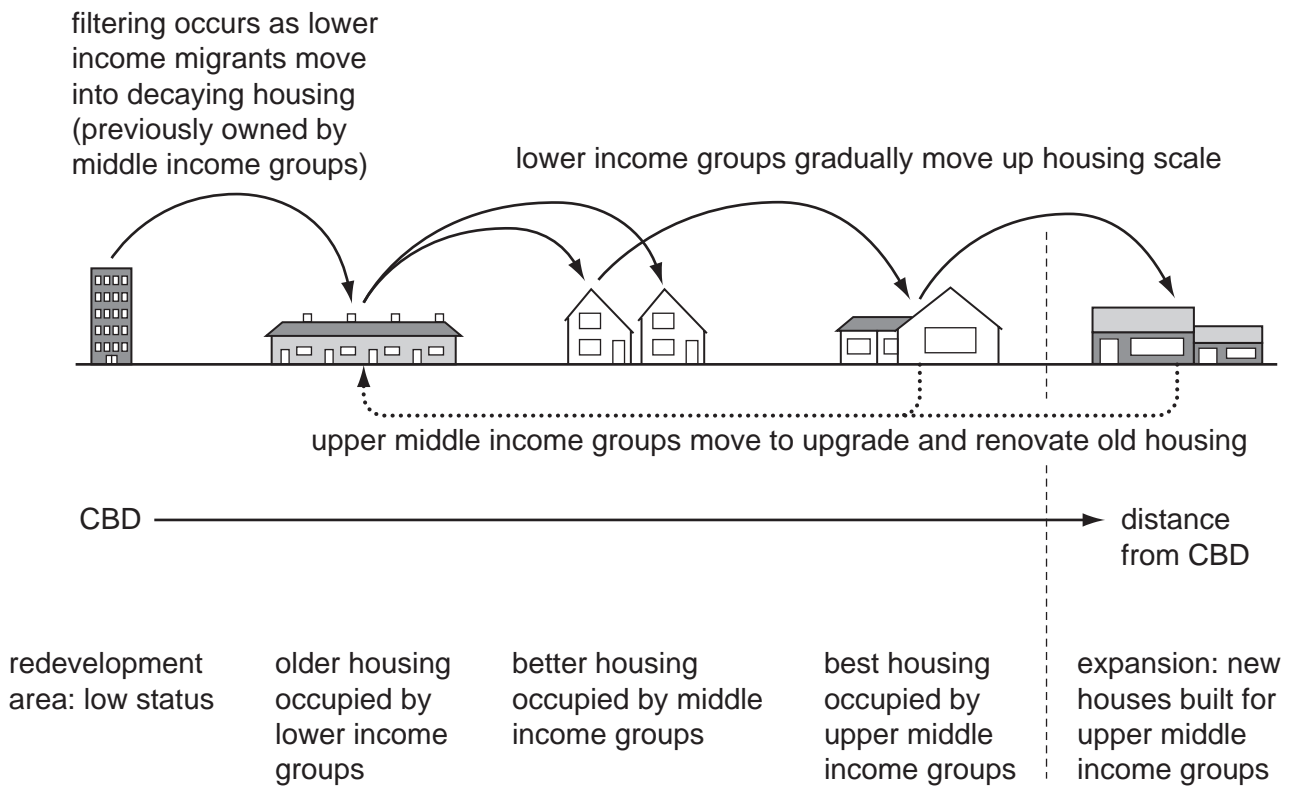
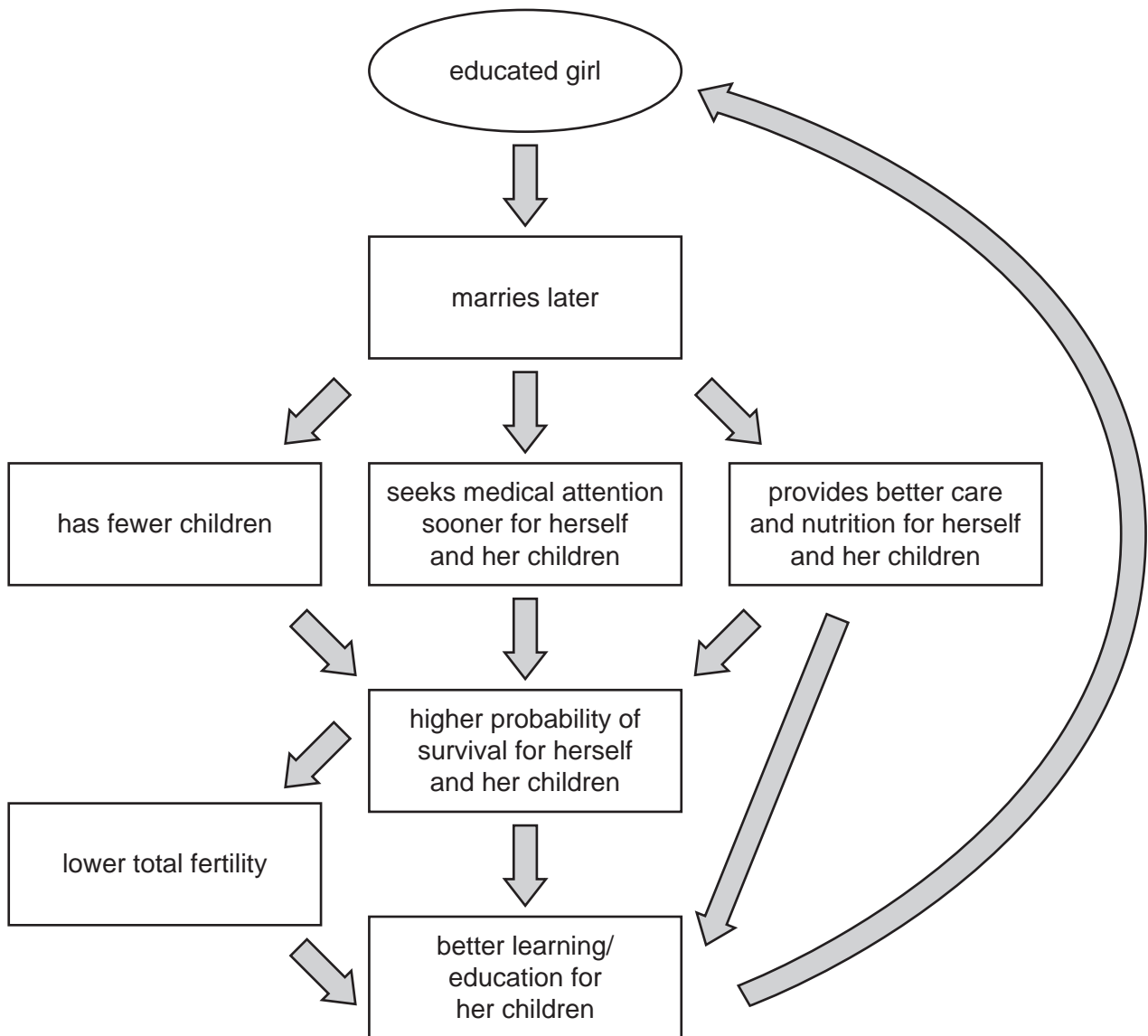


Fig. 6 for Question 10

Possible demographic impacts of educating girls



BLANK PAGE