



UNIVERSITY OF CAMBRIDGE INTERNATIONAL EXAMINATIONS
General Certificate of Education Advanced Subsidiary and Advanced Level

THINKING SKILLS

9694/01

Paper 1 Multiple Choice

May/June 2008

2 hours

Additional Materials: Multiple Choice Answer Sheet
 Soft clean eraser
 Soft pencil (type B or HB is recommended)



READ THESE INSTRUCTIONS FIRST

Write your Centre number, candidate number and name on all the work you hand in.

There are **40** questions on this paper. Answer **all** the questions.

For each question there are five possible answers **A, B, C, D** and **E**. Choose the **one** you consider correct and record your choice in pencil on the separate answer sheet.

Read very carefully the instructions on the answer sheet. Ignore responses numbered 41 – 50 on the answer sheet.

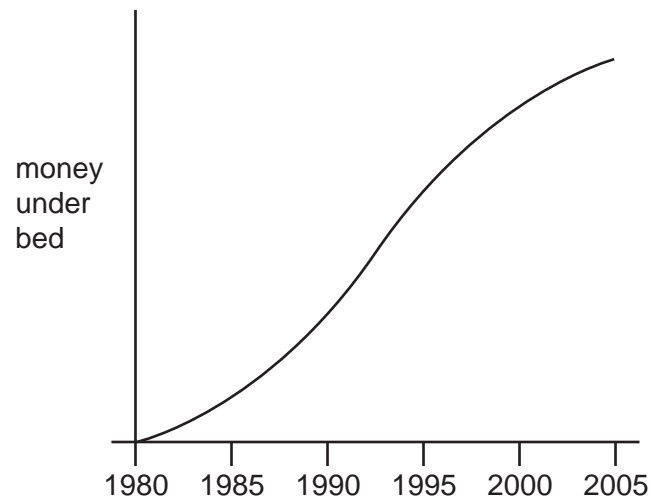
INFORMATION FOR CANDIDATES

Each correct answer will score one mark. A mark will not be deducted for a wrong answer.

This document consists of **26** printed pages and **2** blank pages.

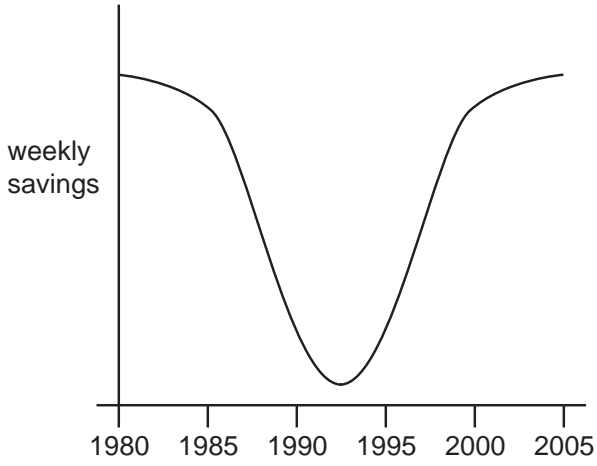


- 1 Ian started saving in 1980 by putting money under his bed. He counted it every week and plotted his total savings. His graph looked like the one below.

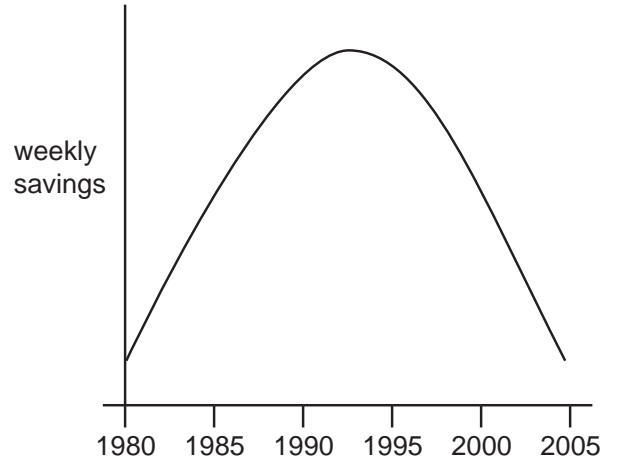


Which of the diagrams below (not necessarily to the same scale) shows his weekly additions to his savings over the same period?

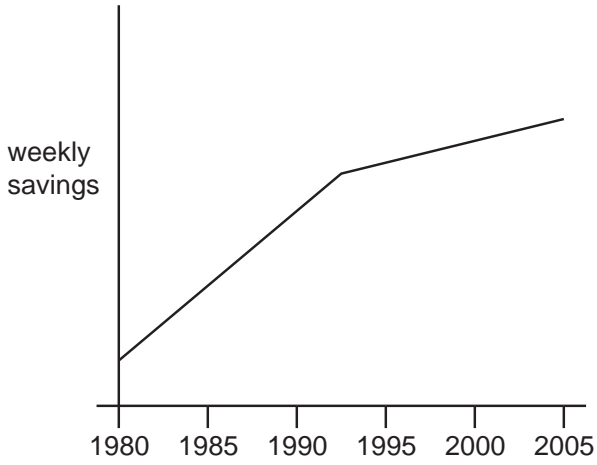
A



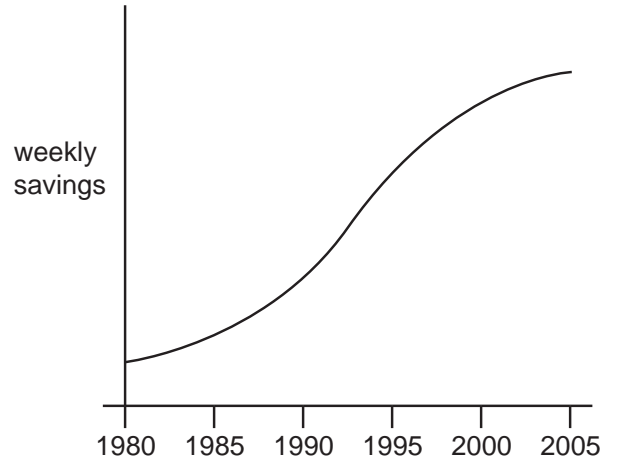
B



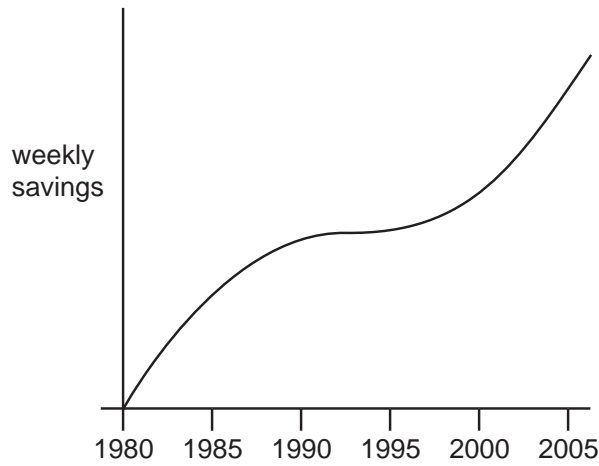
C



D



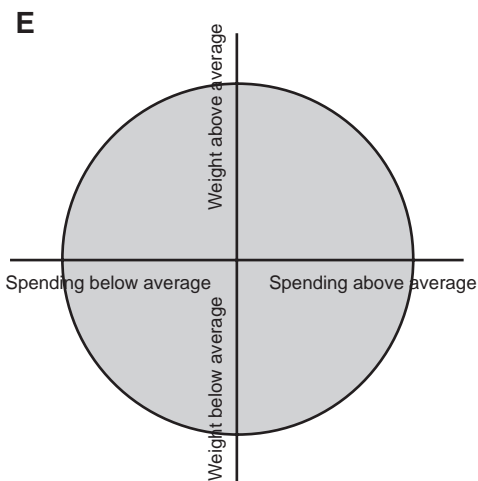
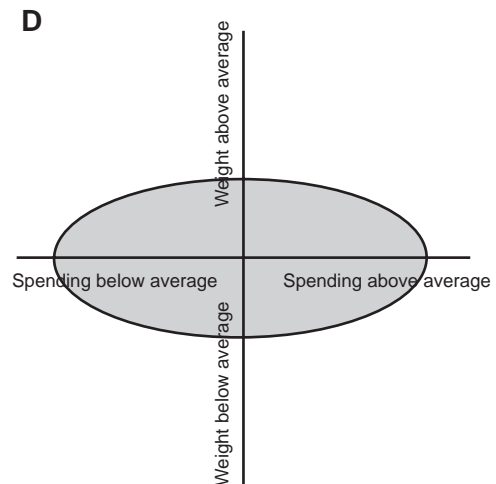
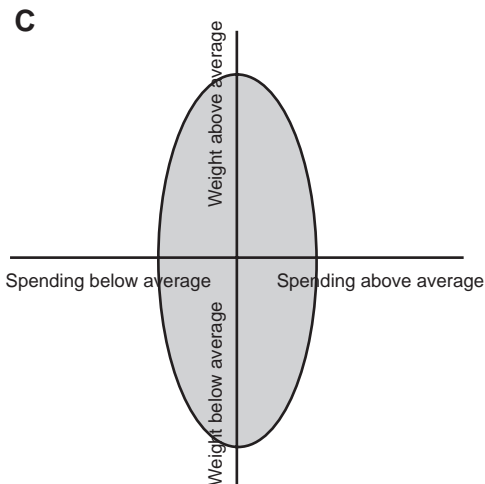
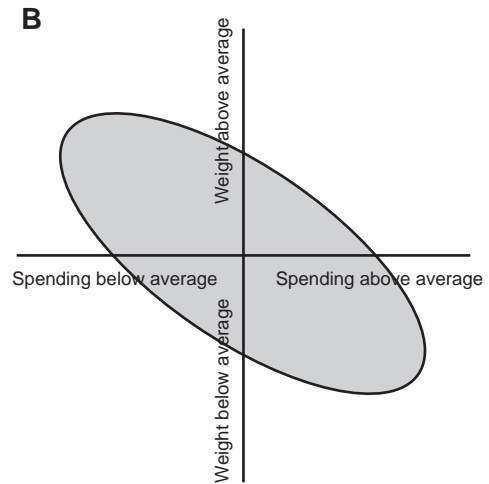
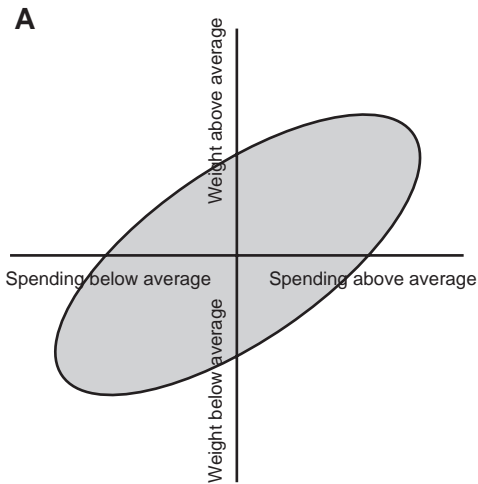
E



- 2 A survey is to be carried out to identify the relationship between spending on food and personal weight (both expressed as a percentage above or below average).

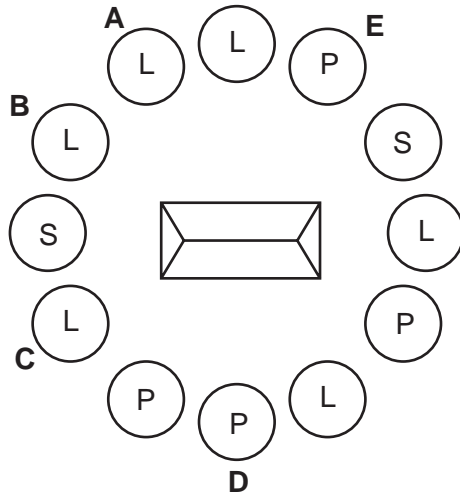
The five diagrams below, all to the same scale, show some possible patterns that the results might take. The shaded areas show the range in which the results might occur.

Which one of the diagrams shows that those who spend more on their food tend to weigh less?



- 3 A farmer is to have a circle of trees planted around his house to provide protection from the wind. The circle is to be made up of 3 types of tree (Larch, Pine and Sycamore). He has stipulated to the gardeners that no tree in the circle of a given type can have the same two types of tree on either side more than once. For example, if the sequence SLP occurs somewhere in the circle, neither SLP nor PLS must occur anywhere else. A tree may have one or two of the same kind beside it (LLP and SSS are allowed, but only once each).

The arrangement they came up with is shown below. However, they got it wrong!



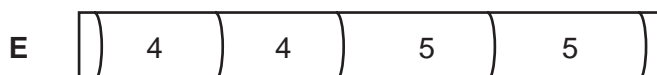
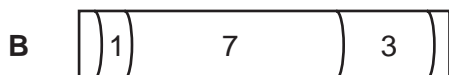
Which tree needs to be changed to ensure the pattern is as the farmer wanted it?

- 4 Where trees have a constant water supply the width of growth each year increases with warmer weather. You can tell from the curve of the tree rings which one is the oldest.

The average temperatures in our local wood for the last ten years given in degrees were:

20 22 19 24 21 21 20 20 23 25

Which one of the following could be entirely from wood growing during the last ten years? (Widths are measured in mm.)



- 5 In a certain family, the father gives out pocket money to his children in the following way. Every month he chooses a number between 1 and 100, and then shares that amount of money equally between the seven children, giving them whole-number sums of money, and giving anything left over to charity.

For instance, if he chose the number 30, he would give \$4 to each child ($\$4 \times 7 = \28) and \$2 to charity.

If the father realises after 100 months that every number between 1 and 100 (inclusive) has been used once, how much has he given to charity?

- A \$276
- B \$294
- C \$295
- D \$297
- E \$300

- 6 In an argument there must be a conclusion, and one or more reasons given to support the conclusion.

From the above definition, which of the following is most obviously an **argument**?

- A Esperanto was an early 20th century attempt to create a world-wide language. However, it has, in fact, become a little used additional language.
- B Everybody should learn a foreign language. It gives a great insight into another culture and is a mentally stimulating exercise.
- C In spite of the dominance of English there are still many different languages in the world today. This is likely to remain the case for many years to come.
- D Some languages are more difficult to learn than others. This is because some languages have very complex grammatical systems which are harder to master than simpler systems.
- E Countries with a language which is not widely spoken in the world often teach their children to be completely fluent in a second language. This is understandable.

- 7 We have been told for many years that China is heading to become the next economic superpower. So you would think that universities would have responded to this opportunity. Yet I have only found four UK universities offering Chinese as a single subject this year while at least 40 are offering French as a single subject. The UK's economic future will be closely tied to that of China, but there's little chance that it will be successful so long as its higher education lives in the past.

Which of the following is an **implicit assumption** of the above argument?

- A Increasing the number of single-subject Chinese courses will increase the number of students taking Chinese.
 - B Knowledge of French Language and Literature will not contribute to the future success of the UK economy.
 - C Reducing the number of universities offering degrees in French will increase the number of universities offering Chinese.
 - D The demand by students for places at University to study Chinese is too low.
 - E The UK higher education system does not respond to the world outside it.
- 8 We should support the introduction of new identity cards that will contain biometric data, such as fingerprints and iris scans. The iris is part of the eye, and the pattern on the iris is a unique record of each individual that cannot be guessed or forged. That means it will be very difficult for criminals to forge or steal someone else's identity - a process often called 'identity theft'. These stolen identities are valuable to criminals as they can be used to buy goods and cover other illegal activities.

Which of the following, if true, would **most strengthen** the above argument?

- A New identity cards will be no bigger than a normal credit card.
- B The cost of the technology to produce the cards will reduce over time.
- C Current security devices, such as passwords, fail if people forget their passwords.
- D Current security devices, such as passwords, fail to prevent over 100 000 identity thefts per year.
- E The use of biometric data on passports will help to reduce illegal immigration.

- 9 Some world leaders and scientists believe that there is no such thing as global warming. They defend this by pointing out that Antarctic temperatures in the 1990s were the lowest ever and that the Antarctic ice sheet is thickening enough in the middle to create a 0.12 mm drop in sea levels each year. However, this is the worst kind of selectivity. The overall temperature trend is up and the edge of the ice sheet is melting by enough to cause a 0.16 mm rise in sea level each year. The net effect is clearly a rise in sea levels - one of the most accurate indications of a warming planet.

Which of the following is the best statement of the **main conclusion** of the above argument?

- A The belief about global warming of some world leaders and scientists is puzzling.
 - B Some world leaders and scientists should accept that sea levels are rising.
 - C Some world leaders and scientists are poorly informed about global warming.
 - D The rise in sea levels is evidence that the planet is getting warmer.
 - E The belief of some world leaders and scientists is based upon very selective evidence.
- 10 Businesses often use expensive incentive packages to keep their workers happy. However, research in the US showed that three-quarters of companies rated as the best places to work provided free snacks to their employees. One company even provided huge bowls of M&Ms, which were changed to a single colour when targets had been met. It is hard to imagine a simpler way of thanking workers for their efforts. The message from this evidence seems clear; if businesses want to have happy workers, they should provide free snacks rather than expensive incentive packages.

Which of the following is the best statement of the **flaw** in the above argument?

- A There is no information about how many companies in the US have adopted the free snacks approach.
- B It is not possible to draw a general conclusion about what businesses should do from the evidence of one company that provided free M&Ms.
- C The companies rated as the best places to work may have used free snacks as one of many incentive packages offered to workers.
- D There may be ways for companies to thank their workers that do not involve free snacks or incentive packages.
- E No evidence is provided to show that unhappy workers are less productive than happy ones.

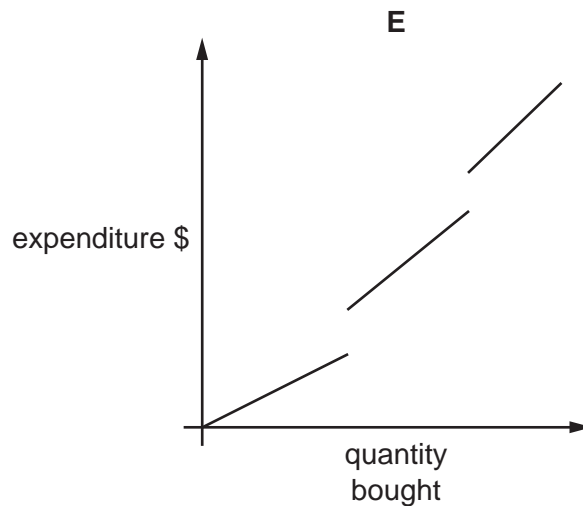
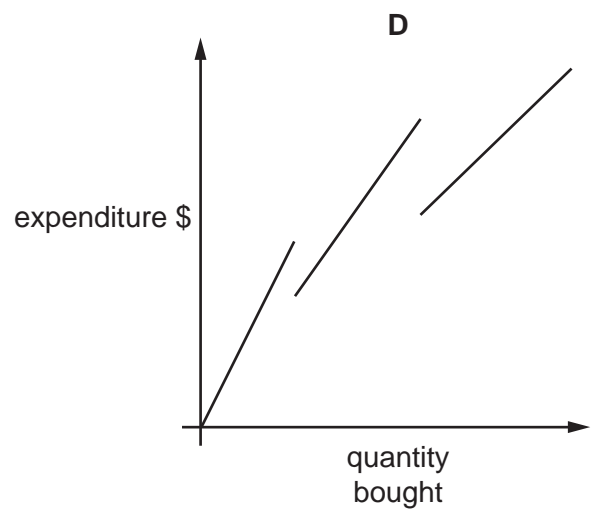
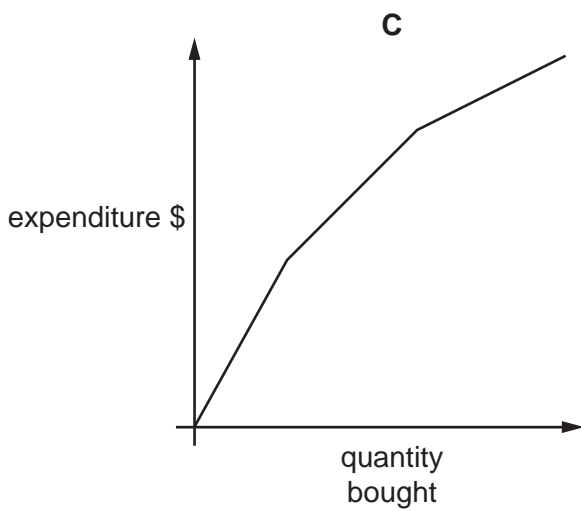
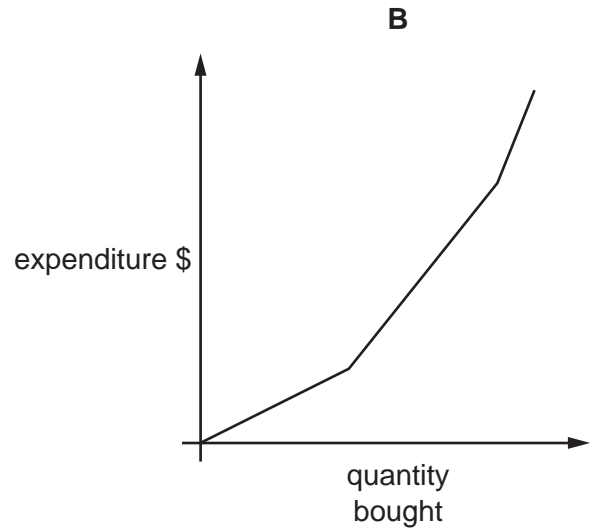
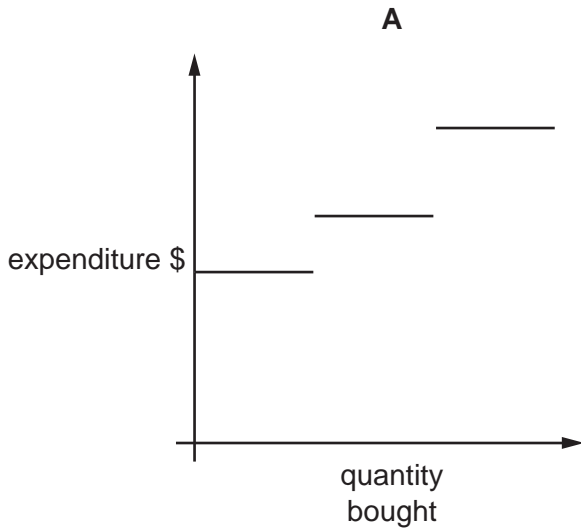
- 11 Clark makes frequent journeys between the towns of Axeford and Barcastle. For the journey he can choose between the bus services named Direct and Loyalty. Direct charges the same fare of \$40 to all passengers at all times. Loyalty has a 'frequent user' discount system and charges \$50 for the first journey a passenger takes, \$49.75 for the second journey, \$49.50 for the third and so on. Each journey is 25 cents cheaper than the previous one until the fare reaches \$20, when there are no further reductions.

At what point would it become cheaper overall to use Loyalty rather than Direct?

- A the 41st journey
- B the 42nd journey
- C the 81st journey
- D the 82nd journey
- E the 121st journey

- 12 The local store sells potatoes loose and gives discounts to customers who buy large quantities. The price is \$1 per kg for up to 10kg, but if you buy more than 10kg the price you pay for all that you buy is \$0.90 per kg. Indeed if you buy more than 20kg the price for all that you buy goes down to \$0.80 per kg.

Which of the following graphs shows the way that a customer's expenditure varies with the quantity of potatoes she buys?



- 13 Population density depends on both population and country area. Thus, the density of Belize is the population 269,736 divided by the country area 22,968, giving a density of about 12 people per square kilometre.

Find the country in the table which has the smallest population density. Which option includes this country?

- A Belize, Djibouti, Estonia
- B Latvia, Panama, Bhutan
- C Montenegro, French Guiana, New Caledonia
- D Solomon Islands, Equatorial Guinea, Monaco
- E The Bahamas, Pitcairn Islands, Vanuatu

Country	Population	Area (km ²)
Belize	269,736	22,968
Djibouti	793,078	23,200
Estonia	1,329,697	45,108
Latvia	2,306,988	64,600
Panama	3,231,502	75,517
Bhutan	2,162,546	47,000
Montenegro	630,548	14,026
French Guiana	187,056	91,000
New Caledonia	236,838	18,575
Solomon Islands	477,742	28,896
Equatorial Guinea	503,519	28,051
Monaco	35,253	1
The Bahamas	323,063	13,878
Pitcairn Islands	67	5
Vanuatu	211,367	12,189

- 14 Vivek fancied a new laptop costing \$700.00. He had been saving hard throughout the holidays, but was still short of \$270.00. He took up casual evening work after school at a local factory assembling kettle parts. Each assembly earned him \$2.50 per kettle up to 10 kettles. Over that number he was paid in addition a bonus of \$1.20 per kettle. He could assemble 13 kettles per evening. After 6 evenings of work he stayed away for three days owing to a toothache.

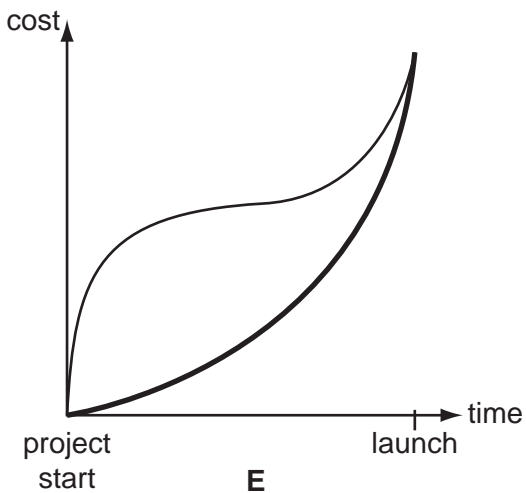
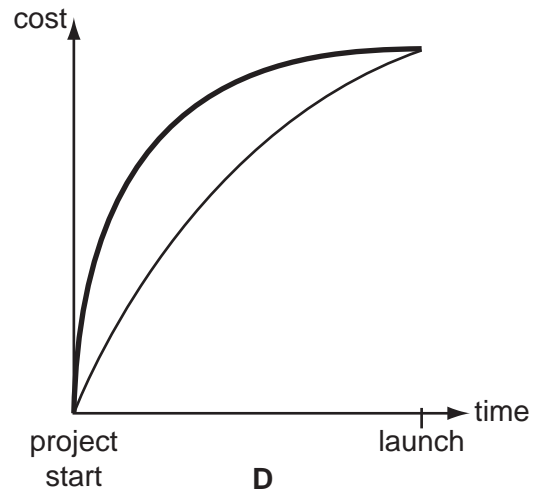
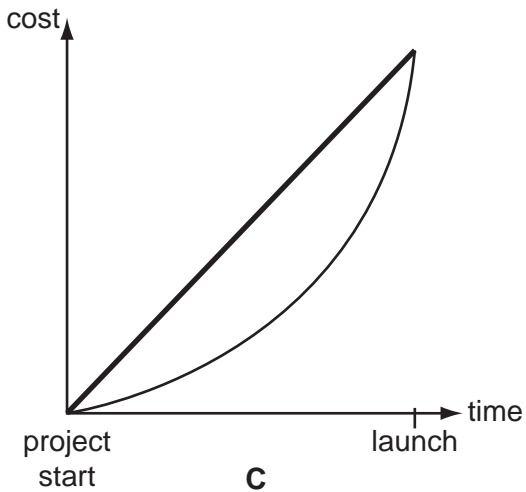
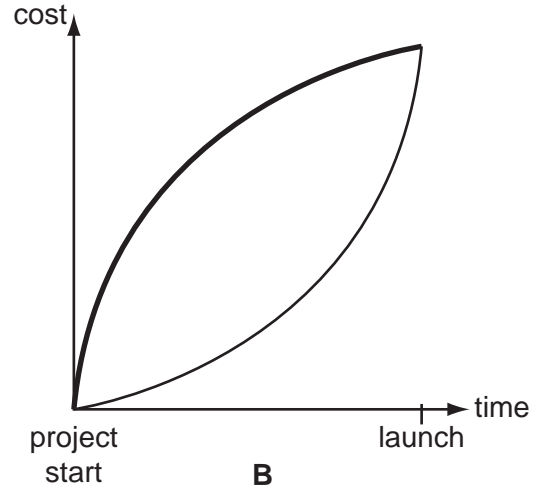
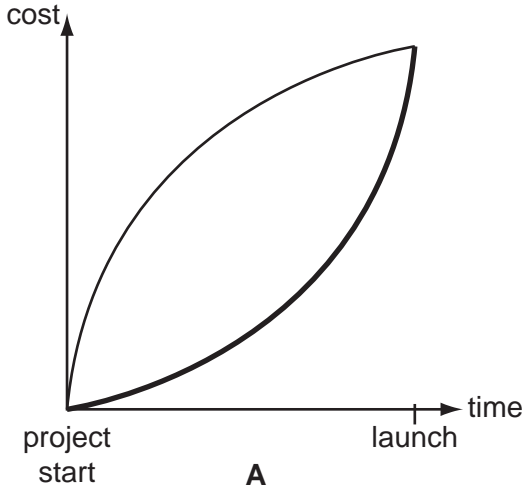
If he had started work on a Monday, October the 6th, on what date would he have earned enough money to quit, assuming that he did not take any other time off?

[The factory operated on a Monday to Friday work basis.]

- A 20th October
- B 21st October
- C 22nd October
- D 23rd October
- E 24th October

15 Malaysia's first manned space flight project had been successful. But journalists were asking about the costs. The Project Director said to himself: "Actual spending was low in the early years of the project, but rose rapidly as we neared the launch date. However, we committed a lot of cost in the early years, so the decisions we made at that time were very important."

Which one of the following models illustrates this point?



— actual spend
 — committed cost

- 16 It is very fashionable to try to remember and to seek meaning in our dreams. However, science has suggested that dreams may be random brain activity that helps to remove useless information stored in our brains. This process keeps the nervous system working effectively and helps us to be in a good mood the next day. If this is the case, remembering and analysing our dreams will certainly be bad for us. It may be wise to base our approach to our dreams on the science of the brain rather than fashion.

Which of the following is an **underlying assumption** of the above argument?

- A Dreaming is the only way that useless information can be removed from our brains.
 - B Those who cannot remember dreams probably do not dream.
 - C Remembering dreams helps to improve our mood during the day.
 - D Analysing dreams may interfere with the process of removal of useless information from the brain.
 - E The explanation of dreams as random brain activity is the only scientific explanation of dreaming.
- 17 Portable music players have become integral to teenage culture. Sadly, many teenagers do not realise that in order to fit a thousand tracks onto their player, the original music is heavily compressed; up to 50% of the musical information is 'thrown away', resulting in poor quality sound. Many teenagers also listen to compressed music downloaded from the Internet. There will be no need for record companies to make expensive quality recordings when so many teenagers are used to, and expect, very poor quality. Therefore the quality of the original studio recording will ultimately also fall.

Which of the following, if true, would **most strengthen** the above argument?

- A Teenagers hear high quality recordings of music on television programmes.
- B Record companies have always produced popular music at a lower quality than classical music.
- C Some popular bands now release their music via the Internet before release on high quality uncompressed CDs.
- D Sales of high quality uncompressed CDs have dropped dramatically since compressed music downloaded from the Internet became available.
- E Advances in technology mean that in the future the number of tracks that can be stored on personal music players will increase significantly.

- 18 The offside law in football (soccer) requires assistant referees to make split-second judgments about the relative position of the football and 6 or 7 players. These players may not be within the field of view of the assistant referees, requiring a small head movement to take in the positions. The physical limitations of the eye mean that the process of taking all this in is likely to take up to 0.3 of a second, during which time a fast running player may have covered 2 metres of ground, radically altering the relative positions of the players. The situation is even more complicated, given that players may be running towards or away from the assistant referee.

Which of the following is a **conclusion** that can be drawn from the above passage?

- A Assistant referees can never make correct decisions about offside in football.
 - B Assistant referees are not the best way of judging offside in football.
 - C The offside law in football needs to be abolished.
 - D We should train assistant referees in accurately judging offside.
 - E Using assistant referees to judge offside is likely to lead to some incorrect decisions.
- 19 Life for the elderly is likely to be cold and lonely. National statistics show that almost half of the 3.1 million people living in a 'one person household' are elderly, and of these more than 400 000 are without an adequate heating system. The social isolation and ill health that result can be seen as criminal in an affluent society, and place a huge burden on health services during the winter. The problem is likely to get worse, given that the number of one person households increased by 30% between 1991 and 2001. Thus it is clear that we should give much greater resources to the care and support of the elderly.

Which of the following is the **best expression** of the author's use of the word 'criminal' in the above argument?

- A illegal
- B contrary to social justice
- C deserving of punishment
- D a sign of selfishness
- E deliberately inflicted suffering

- 20 We are often being encouraged to take a short nap after lunch to fit in with our body's rhythms. This can be difficult to achieve if we are at school or work. Fortunately, recent research should make us feel less concerned if we have this difficulty. It has been found that people who sleep after lunch were more likely to drink too much alcohol, to eat irregularly, and to have unsettled sleeping patterns. Since it is obviously good to avoid such behaviours, we should avoid sleeping after lunch. This recommendation is further supported by the finding that people who sleep after lunch have a higher risk of suffering chest pain.

Which one of the following is the best statement of the **flaw** in the above argument?

- A People with unsettled sleep patterns are not always going to sleep after lunch.
 - B Taking a nap after lunch is sometimes possible even if people are at school or work.
 - C The behaviours associated with taking a nap after lunch are not necessarily caused by taking a nap.
 - D The cause of the relationship between higher risk of chest pain and sleeping after lunch is not explained.
 - E The encouragement to take a short nap after lunch is contradicted by the author's recommendation not to do this.
- 21 Ahmed was given 1050ml of rose water in a jug. He wanted to divide it entirely amongst his three sisters, Tanya, Renuka and Tara. It was decided that the youngest sister Tanya should get the smallest portion, which was to be exactly half of Renuka's, while Tara should get the lion's share, i.e. double that of Renuka's.

How much rose water would Renuka get?

- A 210ml
- B 300ml
- C 316ml
- D 333ml
- E 350ml

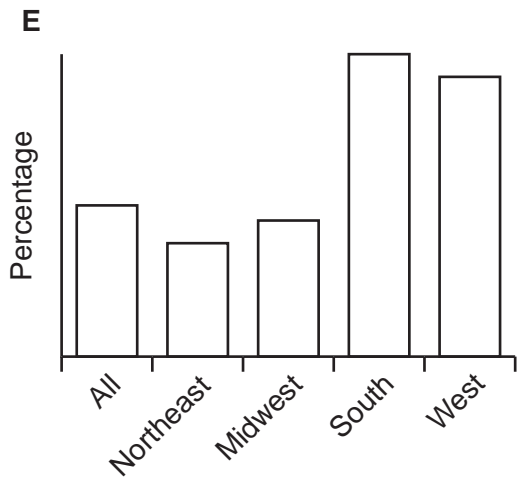
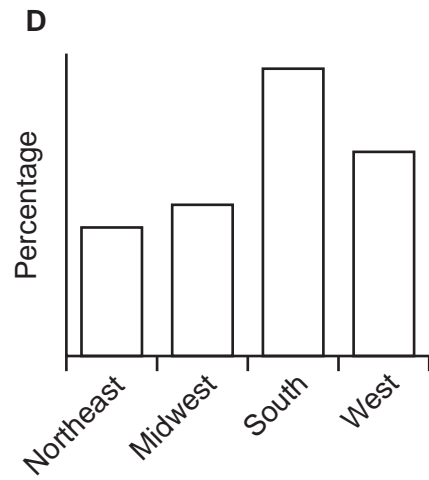
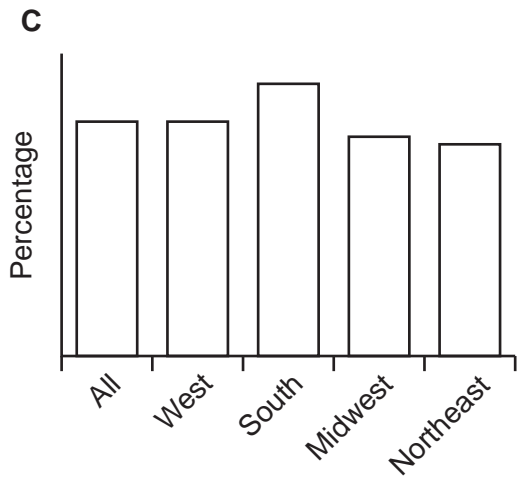
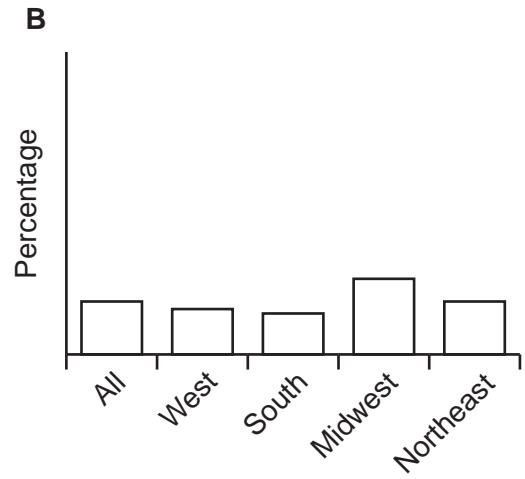
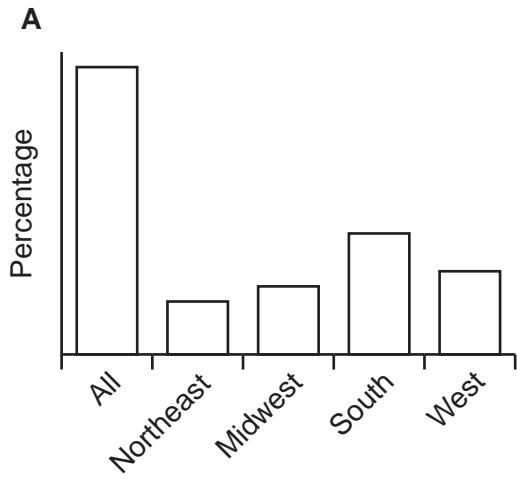
- 22** Soo Peng has won prize money of \$400. She does not need the money for three years from now and considers investing it in one of two banks. Changi Banking offers her a simple fixed interest of 5.5% per year on the capital amount invested for three years (simple interest is the same amount of interest every year on the capital invested). Seletar Inc. offers a compound interest (i.e. interest payable every subsequent year on cumulative total amount of capital + interest) of 5% per year added at the end of each year.

How do the two investments compare?

- A** Changi would be better by \$6.00.
 - B** Changi would be better by \$3.95.
 - C** Changi would be better by \$2.95.
 - D** Changi would be better by \$2.00.
 - E** They would both be the same.
- 23** The United States Census Bureau published the following table showing the number and percentage of people in poverty by geographic region in 2005.

Region	All	Northeast	Midwest	South	West
Number of people (thousands)	36949	6103	7419	14854	8573
Percentage of region population	12.6	11.3	11.4	14.0	12.6

Which one of the following charts could represent all of the percentages shown in the table?



- 24** Bongani is a driver for the Zulu Taxis business. He drives passengers on the route from township A to city B, starting the first trip at 05:00 in the morning. The first journey from A to B takes 1 hour. The remaining journeys take only 30 minutes each way because there is less traffic. There are never any passengers to carry from B to A in the morning. At the end of his working day he has to return the taxi to township A.

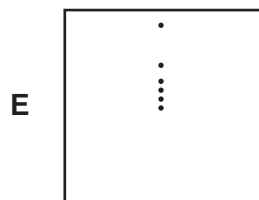
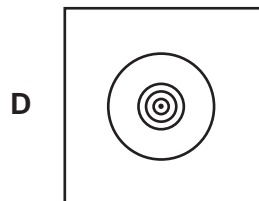
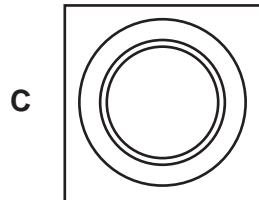
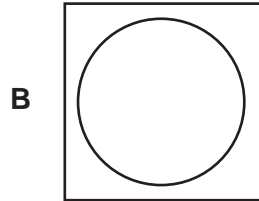
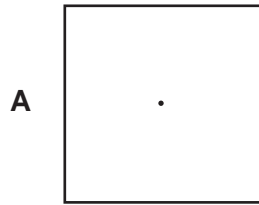
The taxi can legally carry 8 passengers plus the driver. Bongani does not break the law. He is paid 25 Rands per journey by each passenger. Bongani gets to keep all fares paid by his passengers. But he must pay 1000 Rands to Zulu Taxis per day for use of the taxi and fuel.

What is the earliest time Bongani could finish work and have 400 Rands in his pocket after paying Zulu Taxis?

- A** 09:00
- B** 10:30
- C** 12:00
- D** 12:30
- E** 15:30

- 25 There's an old question about a hunter who starts at his hut, travels 2km south, then 2km east, then 2km north and is then back at his hut. The expected answer is that the hut is at the North Pole. However, the hut could also be in the southern hemisphere.

Which one of the following diagrams represents possible sets of points near the South Pole?



- 26 Over the years environmentalists have suggested several alternative fuels for cars in order to reduce emissions. Their current favourite is hydrogen because it produces only water as the combustion product. However, this fuel is unlikely to be successful because of the difficulty of storing enough of the hydrogen gas in the car to allow it to cover a reasonable distance without refuelling. Pressurising the gas increases the amount that can be stored. However, even at dangerously high pressures, the amount of hydrogen that can be stored will take a car only about 160 kilometres. The problem is made worse by the difficulty of refuelling at such high pressures.

Which of the following is an **underlying assumption** of the above argument?

- A Pressurising the hydrogen is the only way that it is possible to store hydrogen in a car.
 - B Nobody would ever use a fuel that will take a car only 160 kilometres before refuelling.
 - C Other fuels, such as ethanol, do not allow cars to travel more than 160 kilometres on a full tank.
 - D Refuelling a gas tank with gas that is under pressure is dangerous.
 - E Better ways of storing hydrogen in cars without using high pressures are unlikely to be developed.
- 27 Approaches to business decision-making fall into two main categories. 'Thinking-deciders' are essentially idealists, who are logical and analytical, represent the established management decision-making culture and are rewarded for their apparent clarity and willingness to make difficult decisions. However, the well-being of staff is increasingly important to the success of many complex businesses. It follows that businesses would be better advised to make more use of 'feeling-deciders' whose emotional, subjective, and compassionate approach is more likely to improve morale and the goodwill of staff.

Which of the following, if true, would **most strengthen** the above argument?

- A 'Feeling-deciders' are likely to take longer to make a decision.
- B Management training schemes recommend the use of both thinking and feeling in decision-making.
- C An emotional approach makes it difficult to make good decisions under pressure.
- D Most business decisions have no impact on the morale and goodwill of the staff.
- E Idealists tend to make decisions that are impractical when implemented and waste the organisation's resources.

- 28 We have significantly improved the survival rate of people with cancer. We can now cure 43 per cent of people who develop the disease. However, the survival rate from lung cancer is very low: five-year survival rates are only 5 per cent. Unfortunately, the treatments for lung cancer are not very effective, so the best strategy is to prevent it. The best way to prevent it is to stop people smoking. One of the most effective ways to stop people smoking is to ban it in public places. For example, in New York such a ban led to 100,000 people giving up smoking. Banning smoking in public places in Kuala Lumpur has much public support. It is something that is entirely justifiable.

Which of the following is the best statement of the **main conclusion** of the above argument?

- A The most effective way to prevent lung cancer is to stop people smoking.
 - B The best way to get people to stop smoking is to ban it in public places.
 - C A ban on smoking in public places is justifiable.
 - D The need to ban smoking in public places has much public support.
 - E The survival rate from lung cancer cannot be improved greatly unless people stop smoking.
- 29 *A ban on smoking in public places takes away some personal freedom from people who smoke.* We should nevertheless support such a ban because it will prevent non-smokers having their health damaged by 'second-hand smoke' from other people. It means that after an evening in a bar or restaurant people's clothes don't smell of smoke. The health benefits of banning smoking will save the Health Service a lot of money. The ban has even been welcomed by some smokers who want to give up smoking and think it will help.

Which of the following best describes the **function** of the sentence printed in italics?

- A It is the main conclusion.
 - B It is a reason supporting the conclusion.
 - C It is a statement that counts against the conclusion.
 - D It is an intermediate conclusion.
 - E It is a piece of background information.
- 30 Which one of the following is making a **reasoned argument**?
- A People will not agree with what they do not understand. Hardly anyone knows what words like 'digressive' mean in the proposed European constitution. It should be no surprise that not everyone agreed with it.
 - B Identification cards make undercover work more difficult, but do not impede terrorists as they do not need to use false names.
 - C In order that everyone on the waiting list is seen within two days, appointments at some doctors cannot be made more than 48 hours in advance. This ensures that those doctors always meet the targets that have been set.
 - D It's only to reduce the costs of chasing non-payment and of issuing refunds that means the television licence in some countries is free for those aged 75 or over.
 - E Trains are measured by how often they are late and by how much. Trains are now slower, and when they are late, as they often are, connections are not held.

31 Amaresh saw the sign at Florida Leisure Pool which announced:

‘Book 10 swims for the price of 7 and save \$8.40.’

But Amaresh wants just one swim. What will he have to pay?

- A \$0.84
- B \$1.20
- C \$1.60
- D \$2.52
- E \$2.80

32 The fruit plants in my garden do not bear fruit during their first summer. The fruits are picked for the next two years and then the plants become too woody and need to be pulled up. Occasionally some of them die over winter. The last five years I had fruit on the following number of plants:

0, 11, 20, 27, 19

Assuming no plants die this winter, what is the fewest that I could have next summer?

- A 0
- B 1
- C 7
- D 8
- E 19

33 An old rhyme used for counting plum-stones when it was common to serve stewed plums (each containing one stone) was: *tinker, tailor, soldier, sailor, rich-man, poor-man, beggar-man, thief*. Then the counting starts again... *tinker, tailor*...

For younger children it's easier just to use the fingers on one hand: *thumb, index, middle, ring, pinkie, thumb, index, middle*...

I can't possibly eat more than 40 plums in a day.

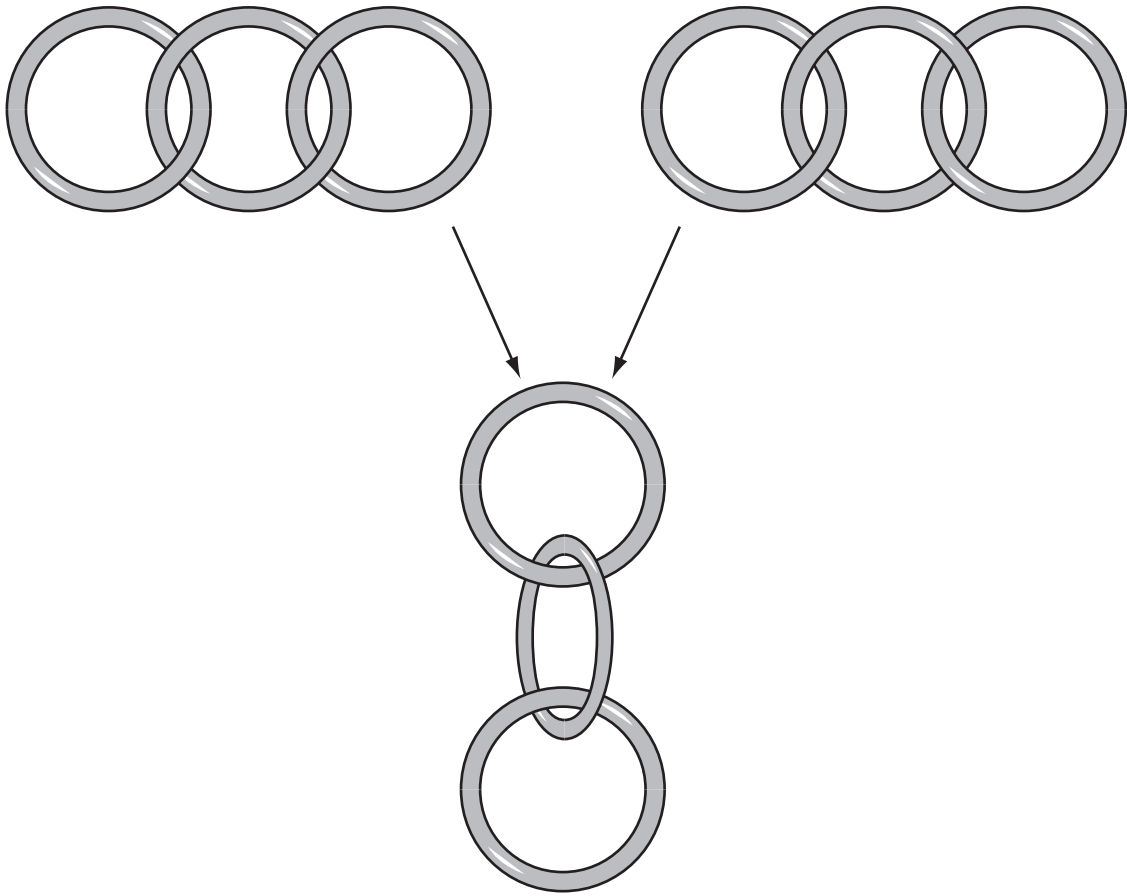
The older child counted my pile of plum-stones and got to 'rich-man', and the younger one made it to 'ring'.

How many stones were there in my pile?

- A 9
- B 13
- C 20
- D 28
- E 29

34 When three interlocking rings are picked up they fall into place and hang as shown.

Whether the bottom ring stays in the same plane as the top one or rotates about 180° will depend on which way the links are arranged.



If there are 6 rings in a row, about how many times could it make a 180° twist from end to end when picked up?

- A 0, 1, 2 or 3
- B 0.5, 1.5 or 2.5
- C 1, 3 or 5
- D 0.5, 1, 1.5, 2 or 2.5
- E 0, 0.5, 1, 1.5, 2, 2.5 or 3

- 35 There must be some reason why Hot Dog sausages are sold in packets of 10 and the bread rolls in packets of 12. I bought just enough packets of each to have the same number of each.

How many items were on the receipt?

- A 2
 - B 10
 - C 11
 - D 12
 - E 22
- 36 Everyone wants to live longer, as is evident from the popularity of lotions and potions designed to stop us ageing. However, the solution may be much simpler. A French woman who lived to be 122 years old claimed that her longevity was due to a vegetarian diet. Clearly, one example cannot prove a causal connection. However, it has also been found that, compared to the vast majority who are meat eaters, lifelong vegetarians are 22% less likely to need hospital treatment for illnesses, and are likely to remain in hospital for shorter periods. Thus it is clear that a meat-free diet is the best way to ensure a longer life.

Which of the following is the best statement of the **flaw** in the above argument?

- A Living longer is desirable only if one is healthy.
 - B Comparisons are not possible in countries where vegetarians are in a minority,
 - C Visiting hospital less frequently does not prove that vegetarians always eat healthily.
 - D Life expectancy increased during the 20th century, despite there being few vegetarians.
 - E Evidence of fewer visits to hospital does not prove that vegetarians live longer.
- 37 Men have a higher rate of passing the driving test. But they go on to commit 88% of all driving offences, including 97% of all dangerous driving offences, and 89% of drink-driving offences. Women are much less likely to ignore traffic signs and pedestrians' rights. Though women are much more likely than men to hit stationary cars (including ramming the car in front in a traffic queue), this is the only type of offence where they outnumber men. A higher percentage of women than men believes speeding to be unacceptable, a point reinforced by the evidence that women are responsible for only 17% of speeding offences. Thus, despite what men think, women show much higher levels of good driving.

Which of the following is the best expression of the **meaning** of the words 'good driving' as used in the above argument?

- A Driving with skill.
- B Driving within the speed limits.
- C Driving safely in fast moving traffic.
- D Driving with consideration for others.
- E Driving with low overall rates of motoring offences.

- 38 We see footballers doing it; we see tennis players doing it. People who exercise often begin with a few minutes of stretching. The belief is that such stretching will reduce the risk of muscle tears and strains. However, this belief in the need for stretching as a warm-up exercise is an ill-informed one. The pulling of legs to stretch them can damage knees and muscles. Of course, some stretching exercises have their place in sport, as part of a daily routine to improve strength and performance. But the best form of warm-up exercise is one that gets the blood moving faster around the body. Stretching doesn't do that, but aerobic activities such as walking and jogging will.

Which of the following is a **conclusion** that can be drawn from the above passage?

- A Warm-up exercises in sport are less useful than people believe.
 - B Stretching exercises work best after an aerobic warm-up exercise.
 - C A combination of stretching and aerobic exercise can be recommended for people who play sport.
 - D People who use stretching as a warm-up exercise will damage their knees and muscles.
 - E Walking and jogging are the most effective way of improving sporting performance.
- 39 London's 'Theatreland' is a thriving industry and a big tourist attraction. Even with many seat prices as high as £60, theatres are typically sold out night after night, and big blockbusters, especially musicals, can run for years and still play to a full house. It is therefore very surprising to learn that 90% of London shows in fact lose money.

The above facts seem to be at odds. Which of the following provides a **plausible explanation**?

- A The numbers of tourists coming to London has declined since September 2001.
- B The theatrical business would not survive unless it was profitable.
- C Not everyone can afford the high ticket prices.
- D Unsuccessful shows are taken off within a few days.
- E The average Londoner goes to the theatre less than once a year.

- 40 X: It is impossible to give an accurate description of any human action unless you can get inside the person's mind to know what their intention is. Even if you ask them, you cannot be sure they will tell you the truth, especially if they are pretending to do one thing whilst actually doing another. For example, if a film actor holds a gun to someone's head he is not threatening to kill that person, he is playing a part, and those are two completely different actions. Similarly if a burglar pretends to be a painter and decorator in order to gain access to a building, the thing he appears to be doing does not describe what he is really doing at all.
- Y: If the burglar starts putting paint on a wall, for whatever reason, then what he is doing is painting a wall. He can't be pretending to do it at the same time as actually doing it.

Which of the following is the best assessment of the **impact of Y's comment** on the argument presented by X?

- A It completely discredits X's argument.
- B It exposes a logical flaw in X's reasoning.
- C It shows that the concept of an action may have two competing interpretations.
- D It establishes that two actions can be performed at the same time.
- E It provides a further example to support X's claims.

BLANK PAGE

Permission to reproduce items where third-party owned material protected by copyright is included has been sought and cleared where possible. Every reasonable effort has been made by the publisher (UCLES) to trace copyright holders, but if any items requiring clearance have unwittingly been included, the publisher will be pleased to make amends at the earliest possible opportunity.

University of Cambridge International Examinations is part of the Cambridge Assessment Group. Cambridge Assessment is the brand name of University of Cambridge Local Examinations Syndicate (UCLES), which is itself a department of the University of Cambridge.